



Alma

Search for articles...

[All Collections](#)[Alma Start](#)[Parent Troubleshooting Guides](#)[Current Alma User](#)

# Current Alma User

Learn how parents can connect their Alma account to a new Alma Start account



Written by Monica Gerlach

Updated over a week ago

If you are a current Alma user and your school has asked you to complete a form in Alma Start or create an account in Alma Start, follow the steps here to connect your current account to a new Alma Start account.

Let's get "START"ed! Your first step is to log in to your Alma dashboard.

You'll notice something new on your dashboard -- once you connect the accounts this alert will disappear. Click on the "connected accounts" button in the Alma Start window from your dashboard.

**Alma School** JM

Welcome, John!

**TODAY IS A SCHOOL DAY**

< Events this week (Jan 12-18) >

Sun	12	Mon	13	Tue	14	Wed	15	Thu	16	Fri	17	Sat	18
● Non-School Day												● Non-School Day	

**Students**

**Caden Ackerman (CJ)**  
12th Grade

10 classes today from 8:30am - 3pm

Open Balance \$5,364.00  
(\$4,464.00 Past Due) >

**Ronald Ackerman (Ronnie)**  
11th Grade

9 classes today from 8:30am - 3pm

Open Balance (\$280.00 Past Due) >

File Cabinet: Submissions 1 empty >

Connect your Alma Start Account Today!

- Fill out forms
- Keep track of tasks
- Review the status of applications

[Connected Accounts](#)

Next, you'll see your connected account tab within your preferences. If you have previously connected your Google account to Alma, you'll see it listed there along with a new account listing for Alma Start. Click "connect account" -- don't worry that you don't have an account yet, we are going to take care of that next and then they'll be connected!

*Will I have to remember another login?*

- Nope! Once you connect the accounts, you'll see notifications for forms to be completed in Alma Start directly in your school dashboard. You'll also be able to access Alma Start by visiting connected accounts within your settings. You'll only need to login to Alma moving forward.

**Alma School** JM

My Connected Accounts

preferences **connected accounts**

**Connected Accounts**

[Connect Account](#)

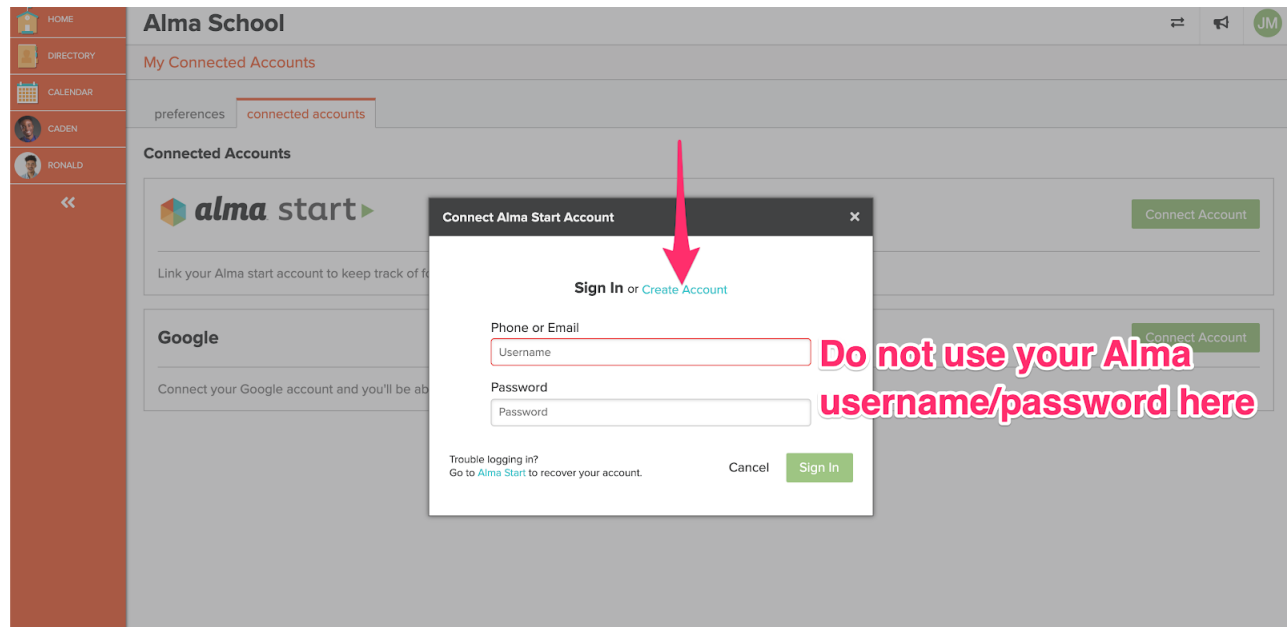
Link your Alma start account to keep track of forms and tasks added to your students

**Google** [Connect Account](#)

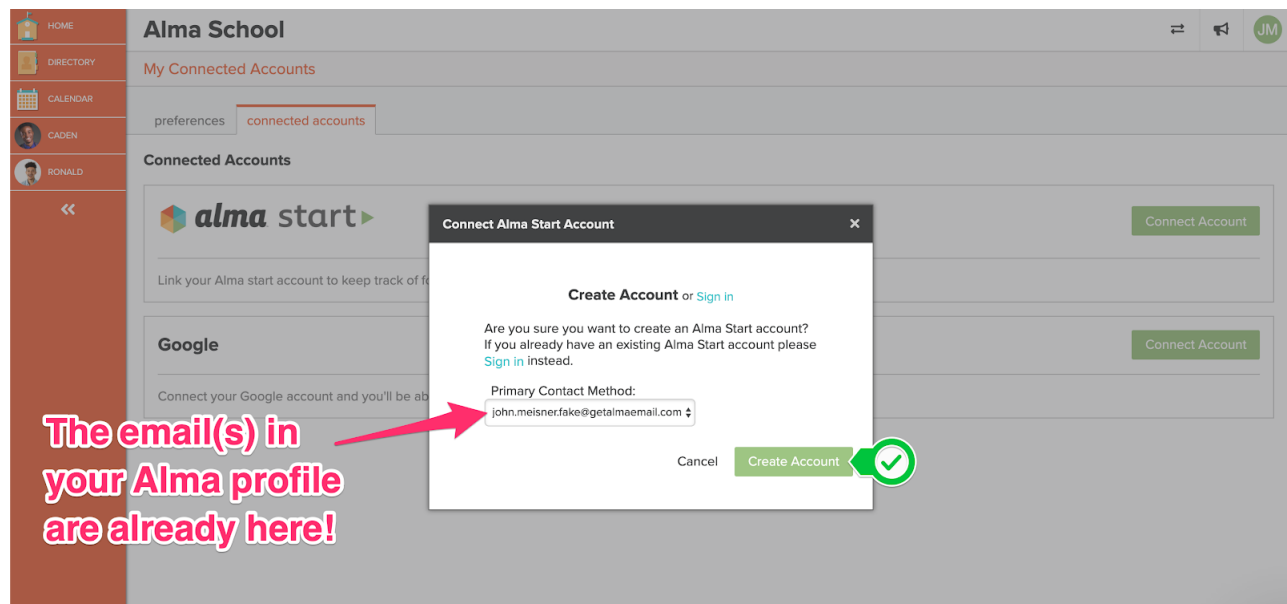
Connect your Google account and you'll be able to sign into Alma with that account

You'll see a pop-up on your screen to Connect an Alma Start account.

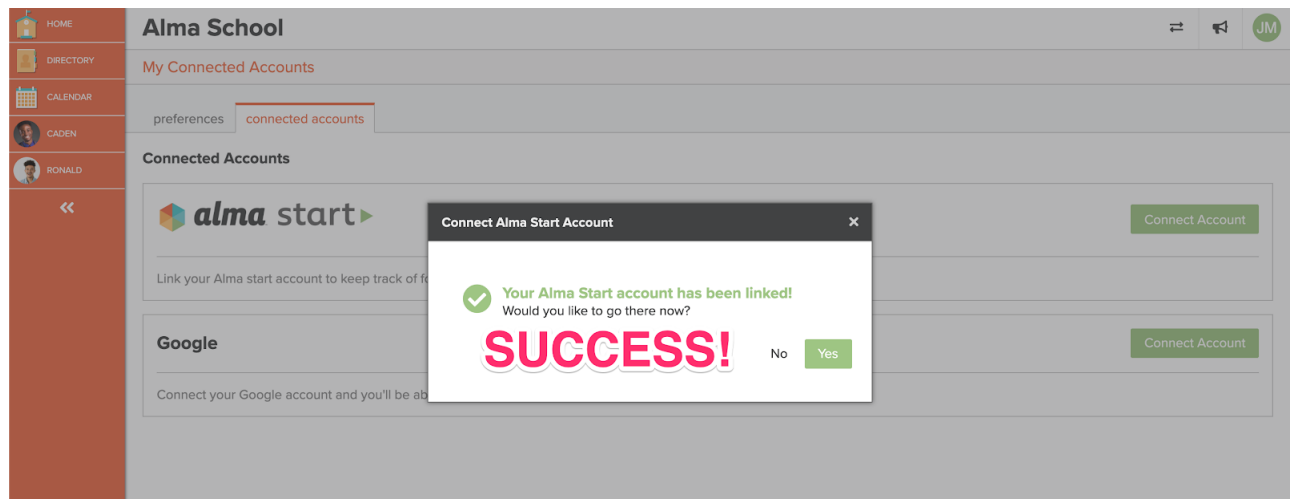
If you already have one you can sign in or click on the "create account" link.



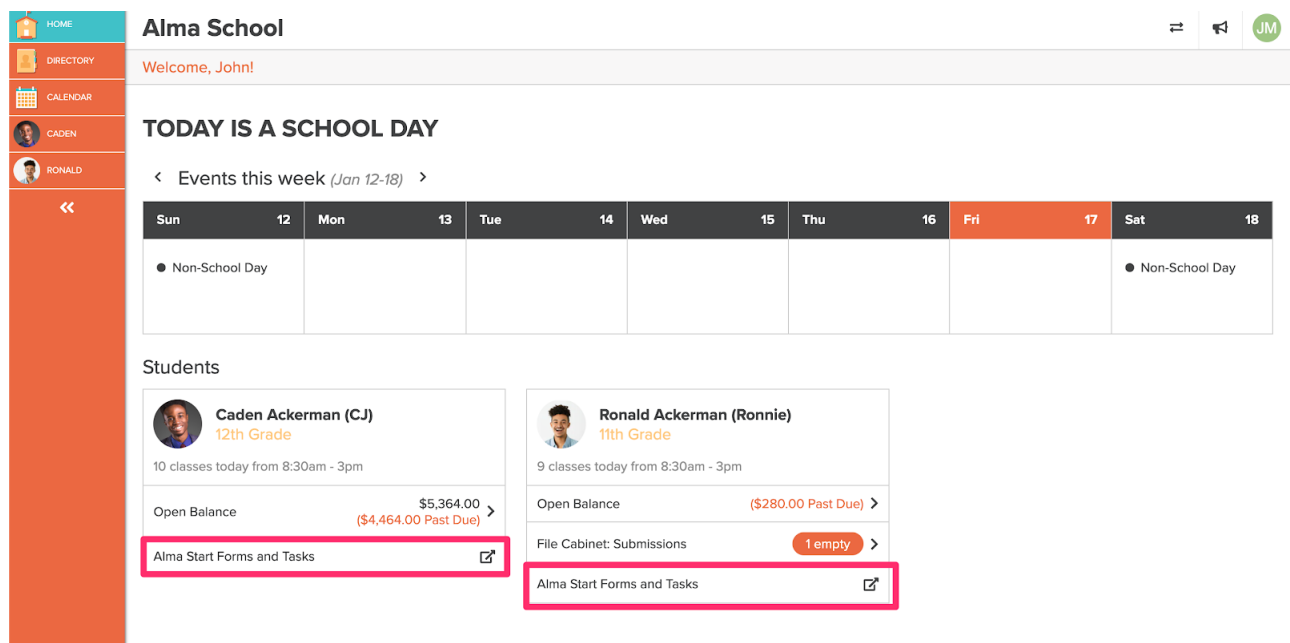
After clicking on "create account" you'll be taken to this screen, your email address will be automatically pulled from your Alma profile. If you have multiple emails on your Alma profile, choose your primary email from the drop-down and then click the green "create account" button.



That's it! You are all set! You've got an Alma Start account and it's linked to your Alma account. You can go there now and see if there are any forms needed for your students.



You can navigate to Alma Start at any time by going to “settings” > “connected accounts” and then clicking on “go to Alma Start” or by clicking on “Alma Start Forms and Tasks” beneath your student(s).



Get to Alma Start by clicking on “Alma Start Forms and Tasks.”

The screenshot shows the Alma School home page. On the left is a vertical navigation menu with options: HOME, DIRECTORY, CALENDAR, CADEN, and RONALD. The main header area includes the Alma School logo, a welcome message 'Welcome, John!', and a notification 'TODAY IS A SCHOOL DAY'. Below this is a calendar for 'Events this week (Jan 12-18)'. A pink arrow points to the 'Alma Start' option in the user profile dropdown menu, which also includes 'Study Guide', 'My Info', 'Connected Accounts', 'Notification Preferences', and 'Log out'. Below the calendar are two student profiles: Caden Ackerman (CJ) and Ronald Ackerman (Ronnie), each with their grade, class schedule, and financial information.

Get to Alma Start through your settings.

This screenshot shows the 'My Connected Accounts' page in Alma School. The page has tabs for 'preferences' and 'connected accounts'. Under 'Connected Accounts', there is a section for 'alma start' with a 'Disconnect Account' button and a 'Go to Alma Start' link. A pink arrow points to the 'Go to Alma Start' link. Below this is a section for 'Google' with a 'Connect Account' button.

Click on your Initials → Connected Accounts. You can access Alma Start or disconnect your account.

Did this answer your question?



